

# MB401 MFP Series

# OKI®



**Fast, full-featured, environmentally friendly  
black & white MFPs for desktop applications**

**MB461 MFP**

**MB471 MFP**

**MB471w MFP**

**MB491 MFP**



## OKI and The Environment

- LED Technology** Long printhead life, high efficiency
- ENERGY STAR® Compliant** Superior energy efficiency
- 2-Sided Printing/Copying** Saves energy and resources
- Deep Sleep Mode** Lowers power to save energy (<3W)
- Auto Power Off** Saves power during periods of non-use
- Separate Toner and Drum** Less disposable material



# With the MB401 MFP Series, you get all the functionality, reliability and productivity features you expect from OKI®.

## Highlights:

- Professional, affordable solutions—print, copy, scan and fax<sup>1</sup>
- Versatile and reliable
- Compact design, ideal for small office or small workgroup
- Ethernet and USB connectivity standard (including walk-up USB slot); Wi-Fi CERTIFIED™ wireless connectivity standard with MB471w model
- Fast black & white printing at up to 42 ppm, copying at up to 40 cpm<sup>2</sup>
- Duplex (2-sided) printing/copying standard
- Multi-tasking functionality standard, enabling two tasks to be performed at once<sup>3</sup>
- Color scanning with send-to functionality
- Document management through Nuance® PaperPort®, OCR with Nuance OmniPage®
- Operator panel with backlit 3.5" LCD display, 1-touch function buttons, alphanumeric keypad
- Full QWERTY keyboard on MB471/MB471w and MB491 models
- 50-sheet reversing automatic document feeder (RADF – scans both sides)
- ENERGY STAR® compliant
- Upgradable paper capacity with 530-sheet second tray
- 1-Year On-Site limited warranty<sup>4</sup>
- Live, toll-free technical support 24/7/365<sup>4</sup>



All four models in the MB401 MFP Series feature a flatbed scanner, as well as a 50-sheet reversing automatic document feeder (RADF).

## Everything the small workgroup requires –

The MB401 MFP Series from OKI combines black & white printing and copying, color/mono scanning with scan-to capabilities, and analog faxing<sup>1</sup>. These affordable, compact, networked MFPs let you produce professional-looking documents—with productivity-boosting speeds and budget-enhancing efficiency.

The MB491 delivers up to 42 prints and 40 copies per minute; the MB461 and MB471/MB471w up to 35 ppm/cpm—and all with a time-to-first-page as fast as 5 seconds.<sup>2</sup>

To help control costs, all MB401 MFP models come with duplex (2-sided) printing/copying standard, so you can save paper and energy. And, for ongoing savings, the 2-piece consumables configuration lets you replace just a toner cartridge when you need to, instead of the toner cartridge and the image drum.

**Sharing files and documents is a snap** – Place your document on the flatbed platen or in the 50-sheet reversing automatic document feeder (RADF) and scan it in color or black & white. Save and send the electronic version to a folder on your PC, the network or FTP site, as an attachment to an e-mail address, or as a fax<sup>1</sup>.

Both MB471 models and the MB491 offer robust fax features, including Internet (T.37) faxing, one-touch dialing, distinctive ring, broadcast faxing, and LDAP support. The MB491 also offers an Auto Delivery feature that routes all incoming faxes to a folder or to specified e-mail addresses.

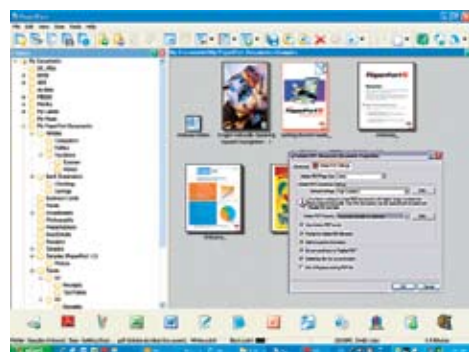
**Further enhance your productivity** – With standard multi-tasking functionality, the MB401 MFP Series enables you to perform several simultaneous tasks, such as scanning a document while the unit is printing, or printing a document during fax communications...<sup>3</sup>

And both MB471 models and the MB491 also have a Job Macro function (accessible right on the operator panel) that records and instantly recalls frequently used tasks and settings—automating them for increased productivity and efficiency.

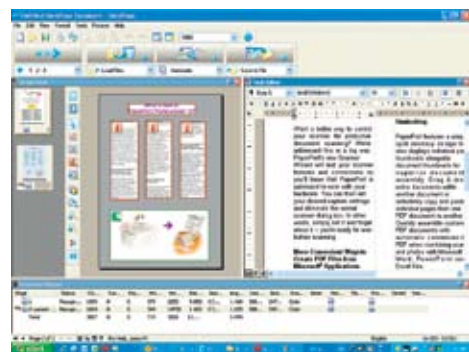
**Printing wirelessly and on the go** – All four models are compatible with mobile printing applications through their network connectivity—and the MB471w is Wi-Fi CERTIFIED™ /b/g/n standard. With its Wi-Fi Protected Setup™ (WPS™), the MB471w can be easily and securely installed on a wireless network either by Push Button or PIN WPS modes.

**Document management made easy** – Among the utilities that come standard with the MB401 MFP Series are PaperPort® and OmniPage® by Nuance®. PaperPort is the industry-leading, award-winning software that will enable you to easily organize your scanned files, further enhancing your productivity. With its intuitive, thumbnail-based interface, PaperPort lets you save any scanned document in a PDF or  $\omega$  format, and quickly make it available for archiving or sharing.

The feature-rich OmniPage converts scanned documents and PDF files into editable file formats used by applications such as Microsoft® Word, Excel®, Adobe® Acrobat® or HTML files.



Nuance's PaperPort is an award-winning scanning and document management application that turns paper into digital content.



OmniPage software converts paper into editable electronic documents (via OCR), saving you time and increasing your productivity.

<sup>1</sup> Fax functionality with MB471/MB471w and MB491 models only.

<sup>2</sup> MB491 model only. MB471/MB471w and MB461 at 35 ppm/cpm. Published performance results based on simplex printing of letter-size sheets in laboratory testing. Individual results may vary.

<sup>3</sup> Multiple tasks are completed automatically in order, not necessarily simultaneously.

<sup>4</sup> Available in the U.S. and Canada only.

# Take control of your office security and your bottom line with these compact desktop MFPs.

**Control the way your MFP is used** – The MB401 MFP Series allows an administrator to grant or restrict access to individuals or groups of users. Simply assign individual PIN identification codes to your personnel, according to their privileges: print, copy, scan-to-email or network folders and, with the MB471/471w and MB491 models, transmit faxes. They can unlock the restricted functions—with your permission—by entering their PIN codes into the machine's control panel.

**Improve your bottom line** – The MB401 MFP Series delivers cost-effective operation as well as an exceptional return on your investment. Its outstanding reliability and long-lasting consumables help you control operating costs and improve productivity:

- Support one device rather than several
- Stock fewer replacement supplies
- Reduce user interventions

All four MB401 MFP Series models have a Deep Sleep mode that uses less than 3 watts of electricity during short periods of inactivity, and will even shut themselves off after a minimum of 4 hours<sup>1</sup> – so you pay less on energy costs. Your investment just keeps looking better and better.

**The MB401 MFP Series from OKI. Performance, flexibility and savings—all in one.**

## MB401 MFP Series at a Glance:



MB461 MFP Operator Panel



MB471/MB471w and MB491 MFP Operator Panel



Full QWERTY keyboard (MB471/MB471w and MB491 models) behind 1-Touch key panel



### MB461 MFP

- Print/Copy/Scan functionality
- Print speed up to 35 ppm and copy speed up to 35 cpm<sup>2</sup>
- 50-sheet RADF; single-sheet flatbed scanner input
- 250-sheet internal paper tray, standard
- 1-sheet manual paper feeder
- Operator panel with 3.5" backlit LCD display
- Cost-efficient 2-piece consumables
- Up to 60,000-page monthly duty cycle
- Supports 4,000-page and 10,000-page toner cartridges<sup>3</sup>
- Optional 530-sheet 2nd paper tray (pictured above)



### MB471/MB471w MFP

Same as MB461 MFP, plus...

- Full-featured fax functionality
- 100-sheet multi-purpose feeder
- Dual access: scan faxes into memory while sending or receiving faxes
- 1-Touch dialing
- Full QWERTY keyboard
- PostScript® 3™ emulation
- Up to 1200 x 1200 dpi print resolution
- Job Macro feature
- Wireless LAN connectivity (MB471w only)



### MB491 MFP

Same as MB471 MFP, plus...

- Print speed up to 42 ppm and copy speed up to 40 cpm<sup>2</sup>
- Up to 80,000-page monthly duty cycle
- Supports high-capacity 12,000-page toner cartridges<sup>3</sup>
- 4 GB SD memory card, standard
- Secure Print (PIN/password job protection)

<sup>1</sup> Power Save button must be pressed to awaken unit from Deep Sleep mode; Auto Power Off is user-configurable (4-hour default).

<sup>2</sup> Published performance results based on simplex printing of letter-size sheets in laboratory testing. Individual results may vary.

<sup>3</sup> Estimated life based on ISO/IEC 19752.

# MB401 MFP Series

## Specifications

### Printer

- **Print Speed:** MB461, MB471/MB471W – as fast as 35 ppm; MB491 – as fast as 42 ppm<sup>1</sup>
- **Duplex Print Speed:** MB461, MB471/MB471W – as fast as 17 ppm; MB491 – as fast as 20 ppm<sup>1</sup>
- **Time to First Page:** As fast as 5 seconds<sup>1</sup>
- **Warm-up Time:** As fast as 25 seconds from Power Save mode
- **Print Resolution:** MB461 up to 2400 x 600 dpi; MB471/MB471W/MB491 up to 1200 x 1200 dpi
- **Processor Speed:** 330 MHz
- **Monthly Duty Cycle:** MB461, MB471/MB471W up to 60,000 pages; MB491 up to 80,000 pages
- **Recommended:** 500–4,000 pages/month
- **Emulations:** All models – PCL® 6, PCL 5e, IBM® PPR, EPSON® FX; MB471/MB471W/MB491 only – PostScript® 3<sup>2</sup>; PDF v1.7
- **Operating Systems:** Windows® 7 (32/64-bit), Vista® (32/64-bit), XP (32/64 bit), Server 2008 (32/64-bit), Server 2008 R2 (64-bit), Server 2003 (32/64-bit); Mac OS X 10.4.0 – 10.7.2; Linux – MB471/MB471W and MB491 only
- **Connectivity:** 10/100 Base-TX Ethernet; USB 2.0 (Device and Host); Wireless (MB471W only)
- **Duplex (2-Sided) Printing:** Standard

### Copier

- **Copy Speed:** MB461/MB471/MB471W – as fast as 35 cpm; MB491 – as fast as 40 cpm<sup>1</sup>
- **Time to First Copy:** MB461, MB471/MB471W as fast as 11 sec.; MB491 as fast as 10 sec.<sup>1</sup> from RADF
- **Copy Resolution:** Up to 600 x 600 dpi
- **Copy Scaling:** 25% to 400%
- **Copy Quantity Selection:** 1–99
- **Duplex (2-Sided) Copying:** Standard
- **Copy Functions:** ID Copy; Collate; n-Up; Mixed originals; Edge erase

### Scanner

- **Scan Type:** Color CIS
- **Document Input:** 50-sheet Reversing Automatic Document Feeder (RADF); Single-sheet flatbed scanner
- **Scan Speed:** As fast as 1.6 sec./page Black & White; as fast as 6 sec./page Color<sup>1</sup>
- **Scan Resolution:** 600 dpi
- **Scan-to:** Folder (CIFS), E-mail (with LDAP support), FTP, TWAIN, WIA, HTTP, USB memory, Application with Actkey software
- **Color Scan Depth:** Input 48-bit, Output 24-bit
- **Contrast Adjustment:** 7 levels

### Fax<sup>2</sup>

- **Fax Modem:** 33.6 kbps Super G3
- **Connectivity:** RJ11 x 2 (Line/Tel), PSTN, PBX Line
- **Fax Memory:** 4 MB (approx. 200 pages<sup>3</sup>)
- **One-Touch Dials:** 16 (8 x 2 using Shift key)

- **Speed Dials:** Up to 100 locations; 20 groups
- **Broadcast Dials:** Up to 100 locations using pre-programmed numbers
- **Auto Delivery:** Routes all incoming faxes to folder or specified email addresses<sup>4</sup>
- **Fax Functions:** Fax from PC; Fax to email; Fax to fax server; Internet Fax (T.37); Transmit – from memory, manual; Auto redial; Receive – auto, to memory, manual; Dual access; Delayed transmit; Broadcast; Auto Fax/Tel switch; Distinctive ring detection; Time/Date stamp

### Address Book

- **E-mail and Fax:** LDAP, 100 E-mail addresses, 20 group addresses

### Utilities

- **Document Management:** Nuance® PaperPort® SEv11 and Nuance OmniPage® SEv16<sup>5</sup>
- **Printer/Job Management:** OKI PrintSuperVision and Job Accounting software

### Memory

- **System Memory:** Standard/Max 256 MB RAM; MB491 only – standard 4 GB SD Memory Card

### Operator Panel

- **Features:** 3.5" backlit LCD display; 1-Touch function buttons; Alphanumeric keypad; QWERTY keypad (MB471/MB471W and MB491 only)

### Paper Handling

- **Standard Capacity:** MB461 – 250 sheets + 1-sheet manual tray; MB471/MB471W and MB491 – 250 sheets + 100-sheet Multipurpose Feeder; RADF – 50 sheets
- **Max Capacity:** MB461 – 780 sheets; MB471/MB471W and MB491 – 880 sheets, 10 envelopes
- **Paper Sizes:**
  - **Multipurpose Feeder:** 3" x 5" SEF up to 8.5" x 52" banner, com-10, com-9, C5, C6, DL and Monarch envelopes; **Tray 1:** Letter, Legal 14"/13.5"/13", Executive, Statement, A4, A5, A6, B5 (JIS); **Optional Tray 2:** Letter, Legal 14"/13.5"/13", Executive, Statement, A4, A5, B5 (JIS); **Duplex:** Letter, Legal 14"/13.5"/13", Executive, A4, B5 (JIS); **RADF:** Letter, Legal 14"/13.5"/13", Executive, A4, A5, B5 (JIS); **Platen Glass:** Letter, A4, A5, B5 (JIS)
- **Paper Weight:**
  - **Multipurpose Feeder:** 16 lb. bond – 90 lb. index (60–163 gsm); **Tray 1/Optional Tray 2/Duplex:** 16 lb. – 32 lb. bond (60–120 gsm); **RADF:** Simplex 16 lb. – 28 lb. bond (60–105 gsm); Duplex 16 lb. – 24 lb. bond (60–90 gsm)

### Security

- **Advanced:** IP and MAC filtering; SSL/TLS, EAP (IEEE802.1X), IPsec
- **Wireless:** WPA™ – Personal, WPA2™ – Personal
- **Secure Print:** PIN or password protection<sup>6</sup>

### Environmental

- **Size (WxDxH):** 16.8" x 16.7" x 17.9" (427mm x 425mm x 455mm)
- **Weight:** Approx. 44.09 lb. (20 kg)<sup>8</sup>

## Ordering Information

Description	Part Numbers	
MB461 MFP (120V)	62438601	
MB461 MFP (230V)	62438602	
MB471 MFP (120V)	62438701	
MB471 MFP (230V)	62438702	
MB471W MFP Wireless (120V)	62438703	
MB491 MFP (120V)	62438801	
MB491 MFP (230V)	62438802	
<b>Options</b>		
530-sheet 2nd Paper Tray	44575708	
16 GB SD Memory Card (MB491)	70061701	
<b>Supplies</b>		
Toner Cartridge	4,000 pg. <sup>9</sup>	44574701
Toner Cartridge	10,000 pg. <sup>9</sup>	44574901
Toner Cartridge (MB491)	12,000 pg. <sup>9</sup>	44917601
Image Drum	30,000 pg. <sup>9</sup>	44574301
<b>OKIcare® On-Site Warranty Extensions<sup>7</sup></b>		
	U.S.	Canada
MB401 MFP Series		
2-Year On-Site Warranty	38030102	38030112
MB401 MFP Series		
3-Year On-Site Warranty	38030103	38030113

- **Power Consumption:**
  - **Idle:** 80W; **Max:** 950W; **Typical:** MB461 – 540W; MB471/MB471W – 580W; MB491 – 610W;
  - **Power Save:** MB461/MB471/MB491 <14W; MB471W <18W; **Sleep:** <3W; **Power Off:** <0.5W
- **ENERGY STAR® Compliance:** Yes
- **Acoustic Noise:** Operating (Printing/Scanning/Copying) 55dB(A) or less; Standby 30dB(A)

### Warranty

- **System:** 1-Year On-Site<sup>7</sup>

For more information on Digital Mono MFPs and supplies from OKI—including OKIcare warranty extensions: **1.800.OKI.DATA (800.654.3282)**<sup>7</sup> or visit our website: **www.okidata.com**

Specifications are subject to change without notice. Featured products may not be available in all countries. Please contact your local office for regional availability.

<sup>1</sup> Published performance results based on laboratory testing. Individual results may vary.

<sup>2</sup> MB471/MB471W/MB491 only. Does not apply to MB461.

<sup>3</sup> Based on ITU-T Test Chart #1.

<sup>4</sup> MB491 only.

<sup>5</sup> Windows only.

<sup>6</sup> Including all consumables.

<sup>7</sup> Available in the U.S. and Canada only.

<sup>8</sup> Estimated life, based on ISO/IEC 19752. Units ships with 2,000-page toner cartridge.

<sup>9</sup> Estimated life, 3 pages per job (may vary depending on the number of printed pages per job).



## OKI DATA AMERICAS, INC.

**USA**  
2000 BISHOPS GATE BLVD.  
MOUNT LAUREL, NJ 08054-4620  
TEL: 800.OKI.DATA (800.654.3282)  
FAX: 856.222.5320

[WWW.OKIDATA.COM](http://WWW.OKIDATA.COM)

**CANADA**  
4140B SLADEVIEW CRESCENT  
UNITS 7 & 8  
MISSISSAUGA, ONTARIO L5L 6A1  
TEL: 905.608.5000  
FAX: 905.608.5040

**LATIN AMERICA**  
2000 BISHOPS GATE BLVD.  
MOUNT LAUREL, NJ 08054-4620  
TEL: 856.231.0002  
FAX: 856.222.5071

**OKI DATA DE MÉXICO, S.A. DE C.V.**  
MARIANO ESCOBEDO, 748 8<sup>º</sup> PISO  
COL. NUEVA ANZURES C.P. 11590  
MÉXICO, D.F.  
TEL: 55.5263.8780  
FAX: 55.5250.3501

**OKI DATA DO BRASIL INFORMÁTICA LTDA.**  
AV. ALFREDO EGÍDIO DE SOUZA ARANHA, 100  
BLOCO C – 4<sup>º</sup> ANDAR  
04726-170 – SÃO PAULO – SP – BRASIL  
TEL: 11.3444.3500  
FAX: 11.3444.3502

